

PagePro 1300W and 1350W installation on Windows Vista.

Information Level: 4

(2 = Semi-confidential, Konica Minolta, internal use only, 3 = Service Partners/Distributors/First Line usage only. 4 = General Information, may be sent to end-users.)

Printer involved: PagePro 1300W and 1350W

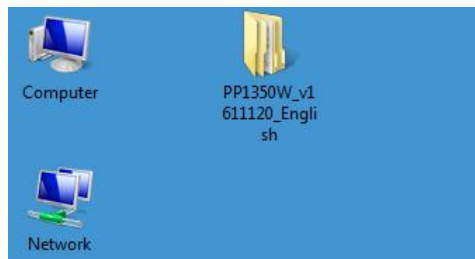
Problem description: Installing the printer on Windows Vista.

Solution / Workaround:

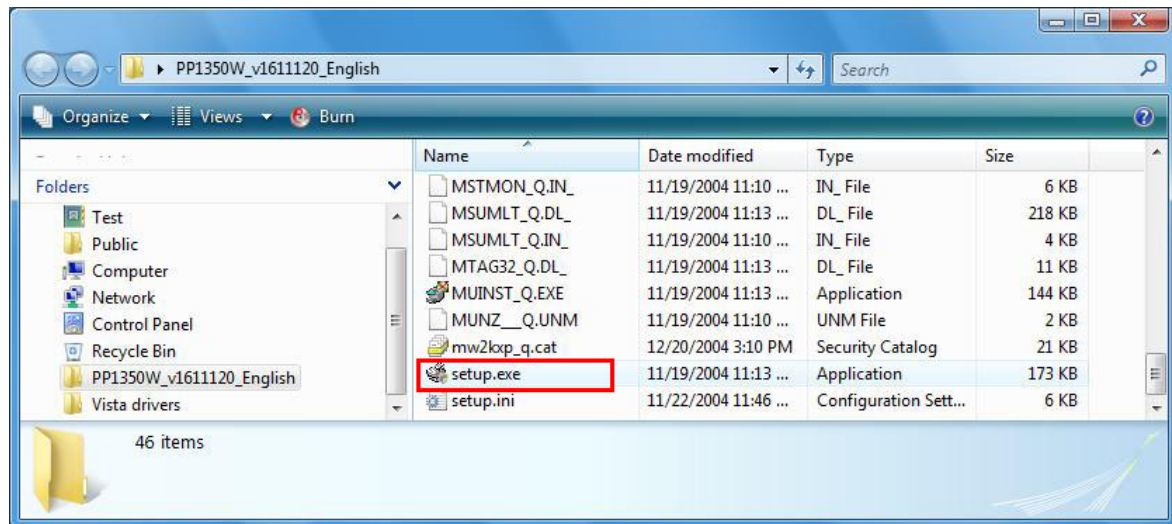
Before installing the printer driver for the printer on your PC, make sure the USB or parallel cable has been **disconnected** from the printer.

This document describes the installation of the PagePro 1350W. The installation of the PagePro 1300W is identical.

Unzip the downloaded driver .zip file to a location on your PC. In the example below the file has been unzipped and the folder containing the driver setup files has been stored on the desktop.



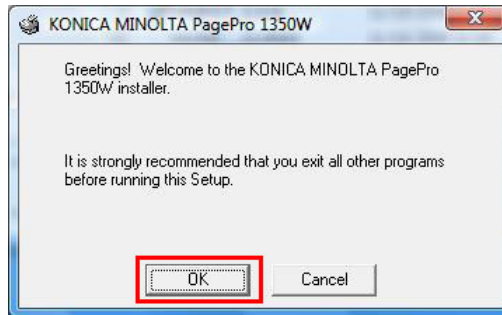
Open this folder by double clicking it.



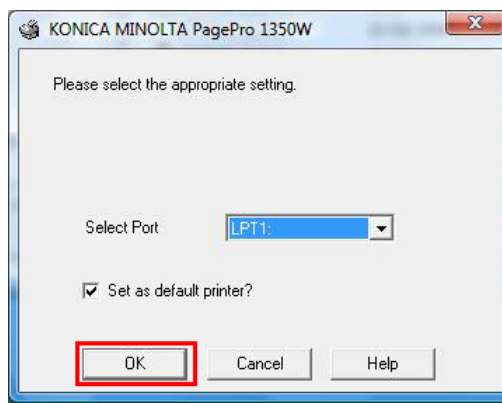
Start the driver installation by double clicking the **Setup.exe** file above.

Select **Allow, I trust this program** in the dialog screen which will open now.

The printer driver installer will start.



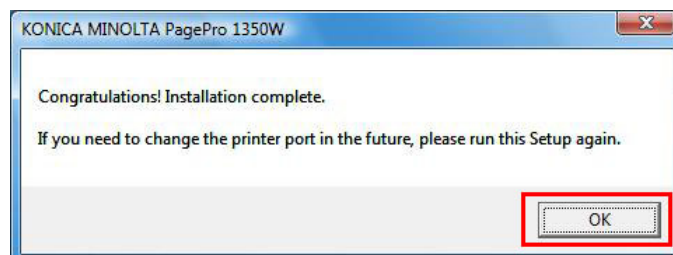
Select **OK** in the screen above.



Regardless of the port you will be connecting the printer to, leave the **Select Port** setting on the default setting (in this example LPT1) and click **OK**.
The port setup will have to be changed later during the installation procedure.



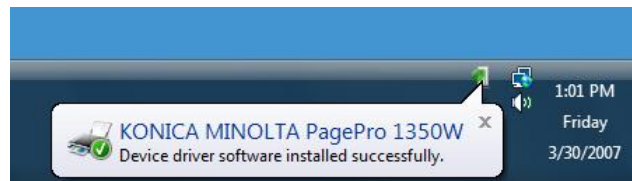
Leave the Printer Name on the default name at this stage and click **OK**.



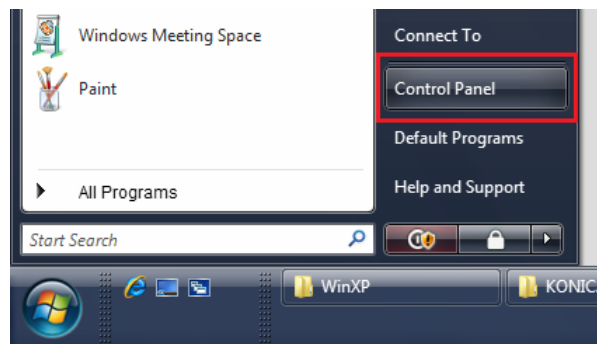
Click **OK** on the screen above. The printer driver has been installed on your system now.

Next, connect the USB or parallel cable to the printer and make sure the printer is switched on.

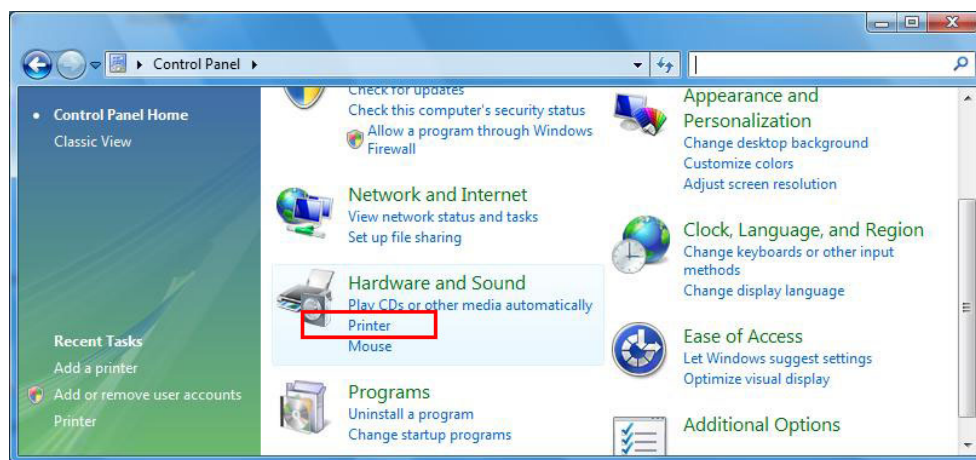
Windows will detect the new hardware and the message below will be displayed at the right bottom of your screen.



Next, select **Start > Control Panel**.

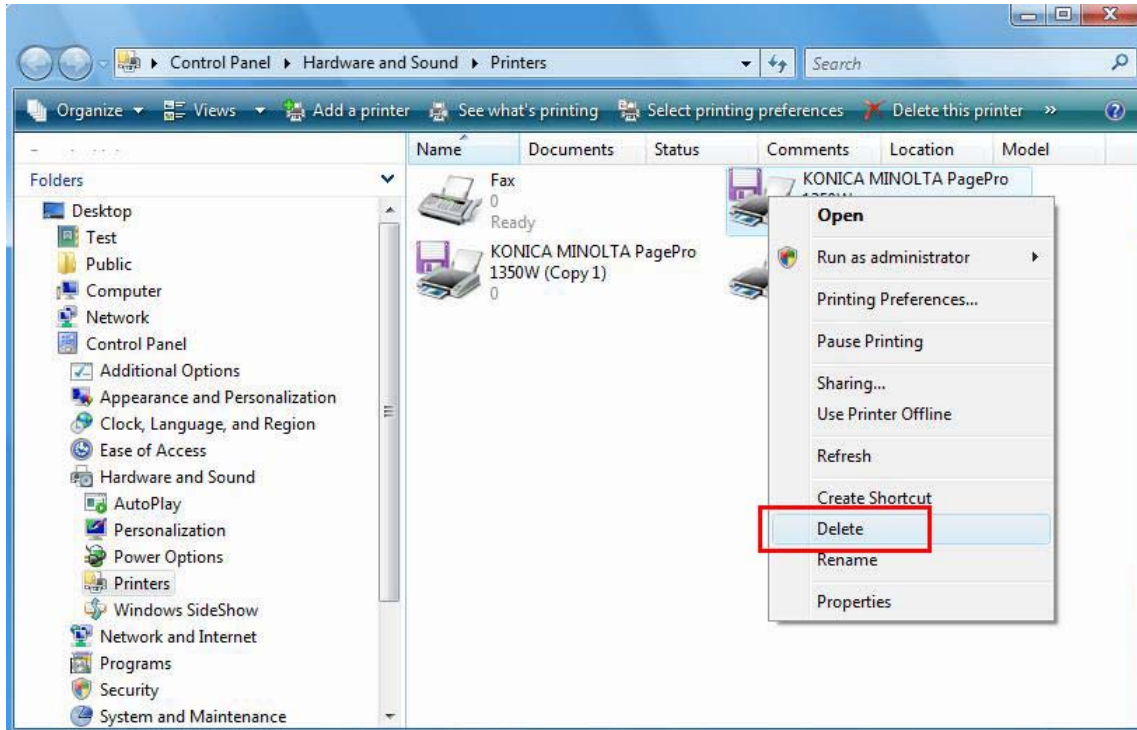


In the **Control Panel** menu, select **Printer**.

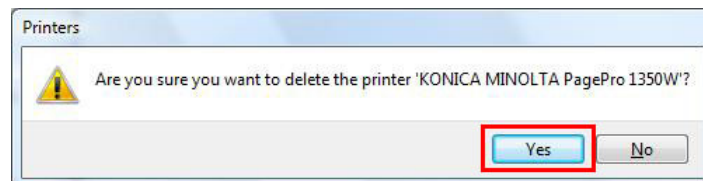


You will see 2 printers have been added on your system.

- **KONICA MINOLTA PagePro 1350W**
- **KONICA MINOLTA PagePro 1350W (copy1)**

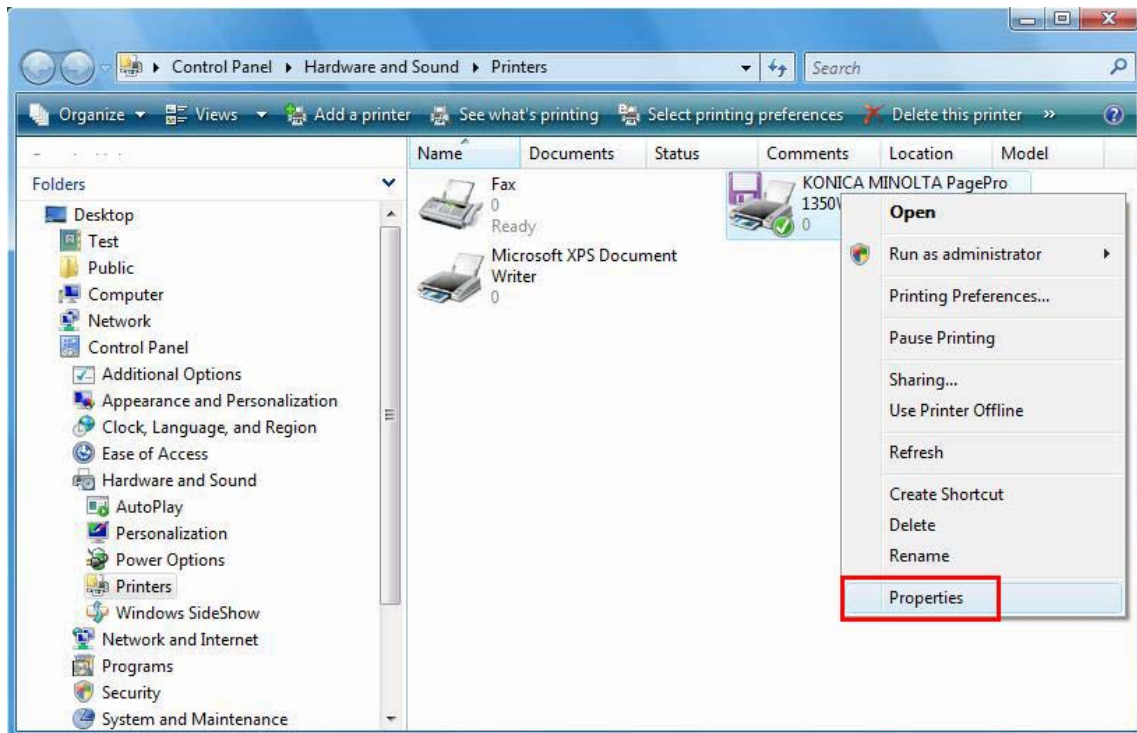


Right click the **KONICA MINOLTA PagePro 1350W** printer and select **Delete** as shown above.

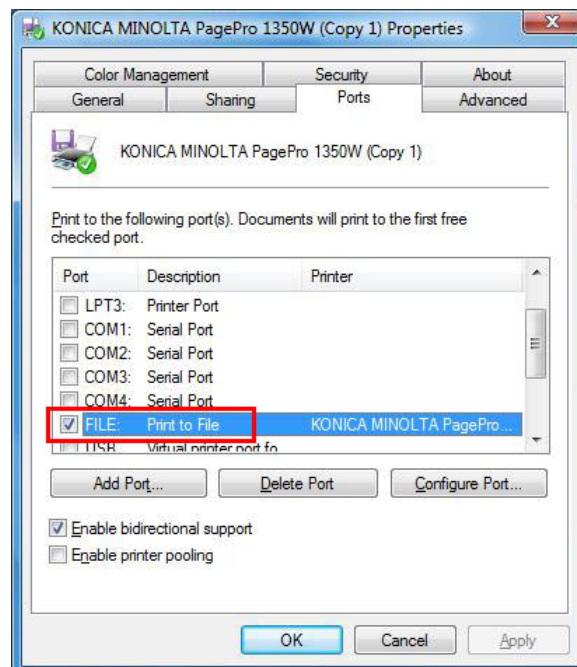


Click **Yes** on the message above to delete this printer.

Next, right click the **KONICA MINOLTA PagePro 1350W (copy 1)** printer and select **Properties** as shown below.

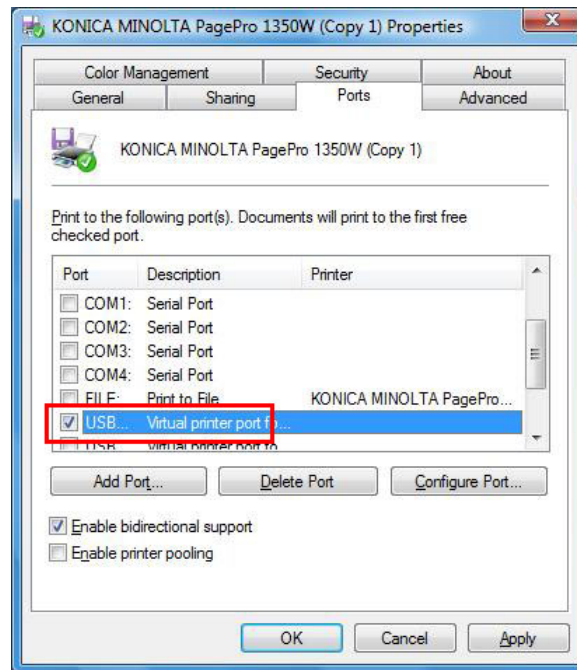


In the **Properties** screen which will open now, select the **Ports** tab.



You will see that the port has been set to **File**.

Instead of File, please select the actual port to which the printer has been connected. This can be a **USB** or **LPT1** (parallel) port.



In the example above the printer is connected to the **USB** port.

Next, click **OK** and close all open dialog screens.